



A paleobiogeographical scenario for the Taxaceae based on a revised fossil wood record and embolism resistance

Marc Philippe, Maxim Afonin, Sylvain Delzon, Gregory Jordan, Kazuo Terada, Mélanie Thiébaut

► To cite this version:

Marc Philippe, Maxim Afonin, Sylvain Delzon, Gregory Jordan, Kazuo Terada, et al.. A paleobiogeographical scenario for the Taxaceae based on a revised fossil wood record and embolism resistance. *Review of Palaeobotany and Palynology*, 2019, 263, pp.147-158. 10.1016/j.revpalbo.2019.01.003 . hal-02066036

HAL Id: hal-02066036

<https://univ-lyon1.hal.science/hal-02066036>

Submitted on 22 Oct 2021

HAL is a multi-disciplinary open access archive for the deposit and dissemination of scientific research documents, whether they are published or not. The documents may come from teaching and research institutions in France or abroad, or from public or private research centers.

L'archive ouverte pluridisciplinaire **HAL**, est destinée au dépôt et à la diffusion de documents scientifiques de niveau recherche, publiés ou non, émanant des établissements d'enseignement et de recherche français ou étrangers, des laboratoires publics ou privés.



Distributed under a Creative Commons Attribution - NonCommercial 4.0 International License

Philippe & al. **Fossil wood and palaeobiogeography of Taxaceae**

A palaeobiogeographical scenario for the Taxaceae based on a revised fossil wood record and embolism resistance

**Marc Philippe¹, Maxim Afonin², Sylvain Delzon³, Gregory J. Jordan⁴, Kazuo Terada⁵,
Mélanie Thiébaud¹**

1 Univ Lyon, Université Lyon 1, ENTPE, CNRS, UMR 5023 LEHNA, F-69622 Villeurbanne, France

2 Federal Scientific Center of the East Asia Terrestrial Biodiversity, Far Eastern Branch, Russian Academy of Sciences, 159 Prospect Stoletiya Vladivostoka, Vladivostok 690022, Russia

3 BIOGECO, INRA – Univ. Bordeaux, Pessac, France

4 School of Natural Sciences, University of Tasmania, Hobart, 7001, Australia

5 Fukui Prefectural Dinosaur Museum, 51-11 Terao, Muroko, Katsuyama, Fukui 911-8601, Japan

Author for correspondence: Marc Philippe, philippe@univ-lyon1.fr

Abstract: Fossil Taxaceae are documented for the Cenozoic throughout most of the northern hemisphere, but the pre-Cenozoic history of this group is still poorly known. The fossil wood record is difficult but can shed light on this history. We critically evaluated the fossil woods assigned to Taxaceae and then compared the fossil record of taxaceous woods to the fossil record of taxaceous leaves and reproductive structures. We then considered the fossil record in the context of family's molecular phylogeny. More than half of the fossil woods attributed to Taxaceae lack diagnostic characters of the family (longitudinal tracheids with helical thickenings and abietoid pitting on radial walls). Fossil wood that can be attributed to the fossil genus *Taxaceoxylon*, as well as some specimens placed in the genus *Protelicoxylon*, which differ only in having mixed type of intertracheary radial pitting, probably belong to Taxaceae. The fossil wood record, as reappraised, is not informative about the history of individual genera within the family, but fits that of leafy remains. Taxaceae wood shows remarkable resistance to embolism and subsequent increased risks of conduit implosion that might be prevented by the presence of tertiary helical thickenings. Our findings suggest a

palaeobiogeographical scenario for the Taxaceae, that involved a Western Europe Early Jurassic cradle and expansion to their Holarctic modern distribution.

Key-words: *Taxaceoxylon*; *Protelicoxylon*; wood anatomy; palaeoecology; biogeography; Laurasia.

Highlights

- the fossil wood record of Taxaceae-like wood is reappraised
- five biogeographically consistent groups are distinguished
- two of them biogeographically fit with the Taxaceae leafy remains record
- modern Taxaceae wood shows remarkable resistance to embolism
- a paleobiogeographical scenario is proposed for the Taxaceae.

1 INTRODUCTION

The Taxaceae (yew family) is a distinctive family of conifers. Although the family is small, with only six genera and 32 species (Farjon, 2010), it is ecologically important, extending widely across the northern hemisphere at mid latitudes (Farjon & Filer, 2013). The family is also of evolutionary and biogeographic interest due to its great age, intriguing distribution, peculiar dispersal strategy (endo-ornithochory) and wide habitat diversity. The family's stem age is likely to be Late Triassic to Early Jurassic and the crown age Mid Jurassic to earliest Cretaceous (Leslie et al. 2012, 2018; Lu et al. 2014; Renner 2009). The family occurs in diverse habitats from tropical rainforest to high latitude forest. Although a mainly northern hemisphere group, it includes the geographically disjunct genus, *Austrotaxus*, from New Caledonia in the South Pacific (Farjon & Filer, 2013).

Although Florin (1948, 1963) proposed a separate order, Taxales, for Taxaceae, molecular phylogenies clearly place the family within the Coniferales (Rai et al., 2008; Leslie et al. 2012; Ryberg et al., 2012; Yang et al., 2012; Lu et al., 2014). These phylogenies also indicate that *Cephalotaxus* and *Amentotaxus* (once placed in a different family, Cephalotaxaceae) can be considered as part of Taxaceae (Lu et al., 2015; Ghimire et al., 2015). This enlarged Taxaceae is well established as being sister to Cupressaceae *sensu lato* (Rai et al., 2008; Leslie et al. 2012; Ryberg et al., 2012; Yang et al., 2012; Lu et al., 2014).

The fossil record of Taxaceae is sometimes considered poor and difficult to interpret

(Taylor et al., 2006; Xu et al., 2015). However, the family's fossil wood record has been little considered. Taxaceae show homogenous and distinctive wood anatomy across the family, except in *Austrotaxus* which has wood that is similar to that of Podocarpaceae (Ghimire et al., 2015). The key anatomical feature of modern Taxaceae wood is that the longitudinal tracheids usually have 1 to 3 thin and delicate helices running on the longitudinal walls (Göppert, 1841; IAWA, 2004). These are tertiary thickenings, usually making a variable but typically 45° – 60° rarely up to 80° angle with the vertical (axial) direction. As they run along the tracheid, helical thickenings can be followed under light microscopy by adjusting the focus, drawing a low-angle zig-zag pattern. The helix tilt is normally much lower than that of the secondary wall microfibrils of “normal” tracheids (10 – 25°) (Fig. 1). As early as 1841, Göppert, on the sole basis of observing helical thickenings, assigned a fossil wood to “*Taxoxylon*” (fossil naming was largely based on supposed affinities at that time).

Helical thickenings occur in some other conifers, e.g., *Pseudotsuga* (Pinaceae). However, the tracheid wall thickenings in Pinaceae differ from those of Taxaceae in being thinner and more oblique. In addition, Taxaceae are the only extant conifers with the combination of helical thickenings, abietinean intertracheary pitting and smooth ray parenchyma cell walls (Phillips, 1948; for wood anatomy bases see IAWA committee, 2004; Bamford et al., 2016).

The Taxaceae fossil wood record deserves reconsideration. Yew-like fossil woods were reviewed by Kraus (1887), Kräusel (1920), Kräusel & Jain (1964) and more recently Süss & Velitzelos (1994). However, these reviews were incomplete, even the recent one, or are made problematic by some erroneous nomenclatural treatments. In particular, many wood fossils have been assigned to Taxaceae based on inadequate evidence. Moreover, several woods with possible affinities to the Taxaceae (e.g. Afonin & Philippe, 2014) have been recorded subsequent to those reviews.

We therefore review the fossil record for woods supposed to have affinities with Taxaceae. We then compare the fossil wood record with that of leaf and reproductive structures. As the wood of Taxaceae shows high resistance to embolism (Bouche et al., 2014) we discuss the link between this important physiological trait and the family's wood anatomy. These sources of evidence are then combined to propose a palaeobiogeographical scenario for the Taxaceae.

2 MATERIALS & METHODS

2.1 Which genera to consider – a nomenclatural preamble – fossil conifer wood, i.e. isolated pieces of homoxylous secondary xylem, or tracheidoxyls, are classified into a

parataxonomy (Philippe & Bamford, 2008). Thus, only in the exceedingly rare cases of an anatomical connection with leaf or reproductive organs can a fossil tracheidoxyl be assigned with high levels of confidence to a family, except possibly for woods younger than the Paleocene. The wood of extant Taxaceae (except *Austrotaxus*) has three key characteristics: 1) longitudinal tracheids with helical tertiary wall thickenings, 2) mostly abietinean pitting on the radial walls of longitudinal tracheids and 3) smooth ray parenchyma cell walls. After the mid-1960s, most fossil woods with these characteristics were assigned to *Taxaceoxylon* R. Kräusel & Jain, 1964, which is based on material from the Pleistocene of Japan (Kräusel & Jain, 1964). However, several other genera have been used for woods with helical thickenings and abietinean, or mixed or araucarian, intertracheary pitting on the radial wall of their tracheids (TRP thereafter, for “tracheid radial pitting”) and have been more or less explicitly claimed to be related to Taxaceae (Bamford et al., 2016). We reviewed all these genera.

The IAWA Softwood List (IAWA Committee, 2004) is our reference for all xylological terms here. The term “helical” is preferred here to the term “spiral”, often also used, as a spiral is normally a planar structure.

2.1.1 Fossil wood genera with abietinean radial pitting

At least seven genera of fossil woods (Table 1) are thought to have affinities with the modern Taxaceae because of the occurrence of helical tertiary thickenings and of a mostly abietinean TRP. Although the names *Taxoxylon* Unger, 1842, and its junior homonym *Taxoxylon* Houlbert, 1910, have been widely used to describe yew-like fossil woods, it is unwise to use these names for yew-like fossil woods. Unger (1842) proposed *Taxoxylon* to name a Tertiary fossil wood from Slovakia, previously described by Göppert (1841) as *Taxites scalariformis*. However, the protologue diagnosis of *Taxoxylon* is somewhat ambiguous, the type specimens are poorly preserved, and most seriously, the helical thickenings are artefacts representing crystal chemical zoning patterns (Kraus, 1887, Pl. III fig. 3). In addition, many poorly preserved specimens of dubious affinities have been assigned to *Taxoxylon* (see e.g. Stopes, 1915: 204).

Also *Taxoxylon goeppertii* Unger, the original type species of *Taxoxylon*, is an illegitimate substitute name for *Taxites scalariformis* H.R. Goeppert. The name *Taxites* had, however, already been previously used by Brongniart (1828) for twigs with no preserved xylem (*T. tounalii*) from the Oligocene of Southern France. We do not consider it wise to use the same generic name for isolated leafy twigs or secondary xylem pieces when the name is a “form-taxon” (Bateman & Hilton 2009).

Taxoxylon Houlbert is a validly published junior homonym. However, the type species, *T. falunense* Houlbert, lacks helical thickenings and has been transferred to *Taxodioxylon* (Vaudois-Miéja, 1971). Moreover the syntype specimens for *T. falunense* are poorly preserved (Philippe & Bamford, 2009).

Göppert (1850) also created two other genera *Spiropitys* and *Physematopitys* for fossil wood that he considered to be Taxaceae. *Spiropitys* has been little-used and is today completely forgotten. It is not wise to use this name because the type is not located and its protologue does not have a clear diagnosis. *Physematopitys* was originally supposed to be related to *Ginkgo*, which was then supposed to be related to the yews because of its fleshy ovules.

Hartig (1848) published the name *Spiroxylon*. To the best of our knowledge this name has not been subsequently used. Although the genus is validly published, it is not possible to use it for yew-like fossil woods as the type has non-traumatic resin canals and normal resin canals are not a feature of the Taxaceae (Philippe, 1995). Almost a century later (1925), Walton, ignoring Hartig's contribution, used *Spiroxylon* for a South-African wood (*S. africanum*) from the Dwyka or Eccra stages (i.e. Late Carboniferous to Early Permian age). With its obvious araucarian TRP and its thick steep pitched helix, *S. africanum* is probably not closely related to Taxaceae.

In 1967 Greguss established *Torreyoxylon*, which he assigned to Taxaceae. But the araucarian anatomy of the type makes *Torreyoxylon* a junior taxonomical synonym of *Agathoxylon* (Philippe et al., 1999). Although etymologically suggestive, the genus *Protospiroxylon* von Lingelsheim, is for woods with anatomy consistent with *Picea* (Pinaceae), i.e. with thickened and pitted ray-cell walls and ray tracheids (Van der Burgh, 1964). In 1995 Prakash et al. published the genus *Pseudotaxoxylon*, whose diagnosis and protologue illustration include araucarian TRP and araucarioid cross-field pits, hence this genus represents a wood with little affinities to modern yew woods. The diagnosis of the more recently described *Sommerxylon* (Pires & Guerra-Sommer, 2004) includes features of the primary structures (pith, primary xylem). Consequently, it cannot be used to name tracheidoxyls. Similarly, *Herbstiloxylon* Gnaedinger in Gnaedinger & Herbst is designed for *Protelicoxylon*-type of secondary xylem associated to primary structures (Gnaedinger & Herbst, 2006). Without explanations Zheng et al. (2008) assigned *Brachyoxylon* Hollick & Jeffrey to the Cephalotaxaceae, but the type of this genus wood lacks tertiary helical thickenings.

Table 1

Summary of nomenclatural and taxonomical features of the genera which were described (p.p. erroneously) as having the diagnostic features of modern Taxaceae wood, i.e. abietinean tracheid radial pitting (TRP); thin-walled, smooth ray parenchyma cell walls; and tertiary helical thickenings in the axial tracheids.

Name	Authorship	Type	Reappraisal	Note
<i>Taxaceoxylon</i>	Kräusel & Jain, 1964	<i>T. torreyanum</i> (Shimakura) R.Kräusel & Jain	Type studied in Tohoku University, Japan	Can accommodate yew-like woods
<i>Physematopitys</i>	Göppert, 1850	<i>P. salisburyoides</i> H.R.Goeppert	Type lost?	Possibly an earlier taxonomical synonym of <i>Ginkgoxylon</i> Saporta; type unlocated
<i>Pseudotaxoxylon</i>	Prakash, Du & Tripathi, 1995	<i>P. chinense</i> Prakash, Du & Tripathi	Not seen	Both the diagnosis and the illustration mention an araucarian TRP and araucarioid cross-fields; if not resulting from alteration bias the helical thickenings are of the broad <i>Prototaxoxylon</i> -type; possibly reworked Palaeozoic material; possibly a junior taxonomical synonym of <i>Prototaxoxylon</i>
<i>Spiropitys</i>	Göppert, 1850	<i>S. zobeliana</i> H.R.Goeppert	Type lost?	Genus described as having both horizontal and vertical resin canals, thus possibly an earlier synonym of <i>Piceoxylon</i>

				Gothan
<i>Spiroxylon</i>	Hartig, 1848	<i>S. ratzeburgii</i> Hartig	Type material reviewed by Kräusel, 1919	The type material, poorly preserved, has normal resin canals, hence a genus of dubious circumscription
<i>Taxites</i>	Göppert, 1850	<i>T. scalariformis</i> H.R.Goeppert	Not seen	An illegitimate synonym of <i>Taxites</i> Brongniart, 1828, which stands for leafy twigs
<i>Taxoxylon</i>	Unger, 1842	<i>T. scalariforme</i> (H.R.Goeppert) Seward	Type material reviewed by Kräusel (1919) and us	Elliptic diagnosis and poorly preserved type, probably with resin canals
<i>Taxoxylon</i>	Houlbert, 1910	<i>T. falunense</i> Houlbert	Type material reviewed by Philippe & Bamford, 2009	An illegitimate junior homonym
<i>Torreyoxylon</i>	Greguss, 1967	<i>T. boureauii</i> Greguss	Type material reviewed by Philippe et al., 1999	From the type material a junior taxonomical synonym of <i>Agathoxylon</i> Hartig

2.1.2 Genera with mixed type of radial pitting

Three genera were used for woods described as having helical tertiary thickenings and mixed type of TRP (Table 2): *Platyspiroxylon* Greguss, 1961; *Protelicoxylon* Philippe, 1995; and *Prototaxoxylon* R. Kräusel & Dolianiti, 1958. Their anatomy is somewhat similar to that of *Protocallitrixylon* Yamazaki & Tsunada, 1982.

The type species of *Platyspiroxylon* (*P. heteroparenchymatosum* Greguss) is definitely araucarian in its TRP, as is the second species included by Greguss in 1967 (Philippe et al., 1999). The genus is thus a junior taxonomical synonym of *Prototaxoxylon* R.Kräusel & Dolianiti. According to Greguss (1967) himself, who favored a link with *Callitris* (Cupressaceae), *Platyspiroxylon* is not related to the Taxaceae. Later, however, Prasad (1986) compared *Platyspiroxylon* and *Prototaxoxylon* and used the former name for woods with a TRP said to be of the mixed type.

Although some woods with mixed type of TRP have been assigned to *Prototaxoxylon* (e.g. Fakhr & Marguerier, 1977), it seems wiser to keep this genus for tracheidoxyls with completely araucarian TRP as in the *Prototaxoxylon* type, *P. africanum* (Walton) R.Kräusel & Dolianiti, and in accordance with the original diagnosis which states “*radial pits never perfectly round or opposite*”.

Protocallitrixylon was described twice as a new genus, first by Yamazaki & Tsunada (1982) and then by Vozenin-Serra & Salard-Chelboldaeff (1992). The first description is validated by a *diagnosis generico-specifica* (ICBN, art. 38.5) based on *P. liassicum* Yamazaki & Tsunada. These authors simultaneously described a “sp. A” and a “sp. B”, however since the Sydney Code in 1981 a “monotypic genus” is understood as one for which a single binomial is validly published even though the authors may indicate that other (unnamed) species belong to the genus. Yamazaki & Tsunada described this genus as having araucarian to mixed-type TRP. Independently, Vozenin-Serra & Salard-Chelboldaeff described *Protocallitrixylon*, but with abietinean TRP and axial parenchyma. Both types (resp. *P. liassicum* and *P. kanakense*) have helical thickenings, but these are predominantly of the callitroid type, paired and transversal, not running on all tracheid faces. No *Protocallitrixylon* species seem related to the Taxaceae.

Table 2

Summary of nomenclatural and taxonomical features of the genera which have been used for yew-like fossil woods with mixed type tracheid radial pitting (TRP) and helical thickenings.

Name	Authorship	Type	Reappraisal	Note
<i>Platyspiroxylon</i>	Greguss, 1961	<i>P.</i> <i>heteroparenchymatosum</i> Greguss	Type material reviewed	A junior taxonomical synonym of

			by Philippe et al., 1999	<i>Prototaxoxylon</i> R.Kräusel & Dolianiti
<i>Protelicoxylon</i>	Philippe, 1995	<i>P. feriziense</i> (Fakhr & Marguerier) Philippe	Type not seen	
<i>Prototaxoxylon</i>	Kräusel & Dolianiti, 1958	<i>P. africanum</i> (Walton) R.Kräusel & Dolianiti	Type material reviewed by Kräusel & Dolianiti, 1958	Should not be used for woods with mixed type of TRP. Helical thickenings broad and at a 30-40° angle with the tracheid axis.

2.1.3 Genera with araucarian type of radial pitting

Numerous genera were occasionally said to be related to Taxaceae although they have been proposed for woods described as having araucarian TRP and tertiary thickenings, associated or not with primary structures: *Palaeospiroxylon* Prasad & Chandra, 1980; *Parapalaeospiroxylon* Pant & Singh, 1987; *Parataxopitys* Maniero, 1951; *Platyspiroxylon* Greguss; *Prototaxopitys* Agashe, 1977; *Prototaxoxylon* R.Kräusel & Dolianiti; *Sinopalaeospiroxylon* Zhang, Wang, Zheng, Yang, Li, Fu & Li, 2007; *Sommerxylon* Pires & Guerra-Sommer, 2004; *Spiroxylon* Walton; *Taxopitys* R.Kräusel in R.Kräusel & Range, 1928. These usually have bi-multiseriate radial bordered pits and their helical thickenings are usually thick, making an angle with the longitudinal direction usually not exceeding 40° (steep pitch). These woods are mostly reported from the Palaeozoic (late Carboniferous – Permian interval) and are typically Gondwanan (Mehta, 1952; Agashe & Shashi-Kumar, 2002; Berthelin et al., 2003).

As both the Taxaceae and their sister-group the Cupressaceae have abietinean to weakly mixed TRP-type, fossil woods with typically araucarian TRP are probably not closely related to Taxaceae. Hence, we do not consider further *Palaeospiroxylon*, *Parapalaeospiroxylon*, *Parataxopitys*, *Platyspiroxylon*, *Prototaxoxylon*, *Sommerxylon*, *Spiroxylon* and *Taxopitys*, except for the few Mesozoic woods which were attributed to these genera. Indeed, as the core of this group belongs to the Palaeozoic, Mesozoic woods might have been misidentified.

Here mentioned fossil woods are referred to, as much as possible, under their basionym, without prejudging the merit of published (or to be published) taxonomical arguments in favor of a renaming.

2.2 Causes for misinterpreting presence of helical thickenings

There are multiple types of structures that are known to be easily confused with helical thickening (e.g. Kraus, 1887; Gothan, 1905; Shimakura, 1936). Despite this, numerous authors have been fooled, even recently. Tunneling bacteria, fungal attacks, differential mineral impregnations or shrinking cracks induced by wood diagenesis can all emphasize the microfibrils and create oblique structures that may be confused with helical thickenings (Fig. 2). The microfibrillar patterns involved in these cases usually consist of several closely parallel strikes which usually do not curve towards the tracheid face rim. These strikes are at a variable angle with the longitudinal axis. This is well illustrated by Araujo et al. (2011, fig. 6 F).

Compression wood longitudinal tracheids have checks in their walls that when observed with optical microscopy can be confused with helical thickenings (Boyd, 1973). The microfibril angle of compression wood tracheids is usually 30°–50° from the longitudinal axis, unlike “normal” tracheids with a predominant 10°–20° angle (Timell, 1986). Also, the tips of these cracks are usually pointed and straight, whereas it is not the case for the true helices. Such diagonal patterns, mentioned as checks or cracks, are well illustrated by Hickey et al. (2011). In some compression wood, borders around pits are usually small, while the pit aperture opens in tracheid lumen at the bottom of an oblique furrow. Such furrows have also been erroneously described as tertiary thickenings, especially when broadened by wood shrinkage during diagenesis (see Greguss, 1967 pl. 35 fig. 19b). They characteristically make a low angle with the tracheid longitudinal axis, usually 30–40°, are much broader than the true helical thickenings and have an aperture in their middle. In fossil woods with such patterns, the pale (supposedly “thin”) band is usually as broad as the dark (supposedly “thickened”) band under optical microscopy, while a pit set on the opposite tracheid wall can sometimes be seen behind the banded pattern (Fig. 3). This appearance is especially common in silicified araucaria-like woods. In a few cases, (e.g. Yamazaki et al. 1979, pl. IV) it is difficult to judge if some structures are yew-like helical thickenings or relatively thick bands sandwiched between two oblique furrows. The angle could then be diagnostic. Intensity of taphonomic processes seems to enhance diverse oblique structures (Evans, 1928).

Zoned patterns in some petrified fossil woods, caused by discontinuous crystal growth have several times been confused with helical thickenings (see e.g. Kraus, 1887; Houlbert, 1910 and Philippe & Bamford, 2009; Fig. 4). These patterns are, however, made of closely parallel but irregularly spaced lines.

Crystal cleavage plans can also be tricky, however they normally run across several tracheids.

Fungal hyphae can mimic grooves within a tracheid because hyphae often follow the S2 cell wall layer (see Greguss, 1967, pl. 32), however their disposition is rarely regular enough to convincingly suggest tertiary thickenings.

In extant *Taxus* and *Pseudotsuga* species helical cavities can occur within the tracheid wall, which curiously seem to be mutually exclusive with helical thickenings (Timell, 1978).

To sum up, it is easy to mistakenly interpret various oblique patterns in the tracheids as helical thickenings, as Kraus (1887) earlier warned. Later, in 1936, Shimakura wrote “As pointed out by Kraus, Lingelsheim, Seward, Stopes, Gothan and Kräusel, there are no true spiral thickenings in most species of *Taxoxylon* or *Taxites*”. Although numerous publications have warned that such helices can be mistakenly diagnosed, Shimakura’s statement is still today quite true. Scanning electron microscopy is a good means to determine whether or not helical wall thickenings are truly present (Philippe et al., 1999; Wan et al., 2016).

2.3 Fossil woods with helical tertiary thickenings – a database

We surveyed the palaeoxylogical literature for woods said to be related to Taxaceae. Based on previous information we focused on the genera whose anatomy conforms to modern Taxaceae, i.e. *Platyspiroxylon* Greguss, *Protelicoxylon* Philippe, *Prototaxoxylon* R.Kräusel & E.Dolianiti, *Sommerxylon* Pires & Guerra Sommer, *Taxoxylon* Houlbert, *Taxoxylon* Unger, *Taxaceoxylon* R.Kräusel & Jain and *Torreyoxylon* Greguss. Palaeozoic woods with strongly araucarian radial TRP and helical thickenings were not considered (e.g. *Taxopitys*, *Parataxopitys*). We also excluded *Oguraxylon* Nishida which has traumatic resin canals and axial parenchyma, features that are not reported for modern Taxaceae. We focused on the Mesozoic as this is a major phase in the radiation of conifers, with the establishment of basal genera (Leslie et al., 2012, 2018).

We located 61 records for 57 taxa. For each record we questioned the possibility that the described material was reworked, especially for fossils in alluvial sediments. As far as possible we examined the type material, to limit interpretation bias, and all protologues were accessed. Our database is complete to the best of our knowledge. Should some papers have

been forgotten, we would be very grateful to get notice. We are confident that no significant data was overlooked.

3 RESULTS

From our reappraisal 12 of the 61 records were assigned to the *Prototaxoxylon* group (araucarian TRP, thick helices with a steep pitch; Table 3), 6 to *Protocallitrixylon* (mixed type of TRP, thin low pitch helices plus callitroid thickenings, Table 4), 8 to *Protelicoxylon* (mixed type of TRP, thin low pitch helices; Table 5), and 11 to *Taxaceoxylon* (abietinean TRP, thin low-pitch helices, no callitroid thickenings; Table 6). Only these three last genera will be considered further. An extra group is recognized for 7 woods from India (Table 7). As the analysis did not unequivocally support assignment to one of the five groups cited here above 43 records were discarded (Appendix),

Because of their araucarian radial tracheid pitting several Mesozoic woods belong to *Prototaxoxylon*. It is striking that they are limited to the Gondwana, where they mostly occur at high palaeolatitudes (Table 3 and Appendix).

Table 3

Fossil woods described as having helical tertiary thickenings and araucarian type of pitting on tracheid radial walls and which are consistent with the genus *Prototaxoxylon* Kräusel & Jain.

Taxon name, authority	Reference
<i>Protelicoxylon feriziense</i> (Fahkr & Marguerier) Philippe	Gnaedinger & Herbst, 2006
<i>Prototaxoxylon acevedoae</i> Gnaedinger & Herbst	Gnaedinger & Herbst, 2006
<i>Prototaxoxylon intertrappeum</i> (Prakash & Srivastava) Prakash & Srivastava	Lutz et al., 1999
<i>Prototaxoxylon intertrappeum</i> (Prakash & Srivastava) Prakash & Srivastava	Gnaedinger & Herbst, 2006
<i>Prototaxoxylon uniseriale</i> Prasad	Gnaedinger & Herbst, 2006

<i>Sommerxylon spiralosus</i> Pires & Guerra-Sommer	Pires & Guerra-Sommer, 2004
<i>Taxaceoxylon cupressoides</i> Sharma	Sharma, 1971
<i>Taxaceoxylon sahnii</i> Rajanikanth & Sukhdev	Rajanikanth & Sukhdev, 1989
<i>Taxaceoxylon</i> sp.	Mahabale, 1967
<i>Taxaceoxylon</i> sp.	Caminos et al., 1995
<i>Taxoxylon</i> sp.	Lakhanpal et al., 1976
Wood of type D	Yamazaki et al., 1979

Except for the New-Caledonian data (Vozenin-Serra & Salard-Chelbodaëff, 1992), *Protocallitrixylon* woods form a spatio-temporally coherent unit (Table 4). They are distributed exclusively in the Far-East Asia, from the Early Jurassic to the Early Cretaceous. First encountered at low to mid palaeolatitudes, their range subsequently shifted northward, within an area characterized by a cold-temperate flora (Oh et al., 2011). The occurrence of the genus in the Teremba terrane of New-Caledonia is questionable, as most palaeogeographic reconstructions have this area at the southern rim of a wide open oriental Tethys (Cluzel et al., 2012) during the Jurassic.

Table 4

Fossil woods with helical tertiary thickenings, mixed type pitting on tracheid radial walls and callitroid thickenings, here accepted as belonging to the genus *Protocallitrixylon* Yamazaki & Tsunada. The nov. comb. *Protocallitrixylon pulchrum* is based on the basionym *Taxoxylon pulchrum*, He Dechang, *The coal forming plants of Late Mesozoic in Dan Hinggan Mountains*, p. 13, pl. 8 figs. 3-3a, pl. 9, figs. 1-1f; 1995.

Taxon name, authority	Reference
<i>Protocallitrixylon kanakense</i> Vozenin-Serra & Salard-Chelbodaëff	Vozenin-Serra & Salard-Chelbodaëff, 1992

<i>Protocallitrixylon liassicum</i> Yamazaki & Tsunada	Yamazaki & Tsunada, 1982
<i>Protocallitrixylon pulchrum</i> (He Dechang) nov. comb.	He Dechang, 1995
<i>Protocallitrixylon</i> sp. A	Yamazaki & Tsunada, 1982
<i>Protocallitrixylon</i> sp. B	Yamazaki & Tsunada, 1982
<i>Protocallitrixylon</i> sp.	this work; Fig. 5

Protelicoxylon woods, as here revised, form another spatio-temporally coherent unit (Table 5). They are distributed exclusively in Eurasia, from the Early Jurassic to the Mid-Jurassic – Early Cretaceous. First encountered in Western Europe, their range apparently shifted eastward. The exact age of the Cambodian data is unfortunately not well constrained (Philippe et al., 2004). *Protelicoxylon* is not reported to have co-existed with *Protocallitrixylon*. In Iran, it co-occurs with *Xenoxylon* Gothan (Nadjafi, 1982), a palaeoecologically significant genus that indicates relatively wet settings (Philippe et al., 2017).

Table 5

Fossil woods with helical tertiary thickenings and mixed type pitting on tracheid radial walls, here assigned to the genus *Protelicoxylon* Philippe.

Taxon name, authority	Reference	Age	Country
<i>Protelicoxylon asiaticum</i> (Serra) Philippe	Serra, 1969	Early? Cretaceous	Cambodia
<i>Protelicoxylon feriziense</i> (Fakhr & Marguerier) Philippe	Fakhr & Marguerier, 1977	Middle Jurassic	Iran
<i>Protelicoxylon lepennecii</i> Philippe	Philippe, 1995	Toarcian	France
<i>Protelicoxylon</i> <i>parenchymatosum</i> (Greguss) Philippe	Greguss, 1967	Toarcian	Hungary

[<i>Prototaxoxylon persicum</i>]	Nadjafi, 1982	Early to Middle Jurassic	Iran
<i>Protelicoxylon</i> sp.	Barbacka & Philippe, 1997	Hettangian	Hungary
<i>Protelicoxylon</i> sp.	Philippe et al., 2006	Sinemurian	Romania
<i>Protelicoxylon</i> sp.	New data	Toarcian	France (Nancy)

First appearance date for the genus *Taxaceoxylon* is the Early Cretaceous. At that time it was exclusively distributed in North-Eastern Eurasia. By the Late Cretaceous it occurred in Northern America, and in the Tertiary it was distributed throughout the Palaearctic (Table 6).

Table 6

Fossil woods with helical tertiary thickenings and abietinean type pitting on tracheid radial walls, here considered assignable to the genus *Taxaceoxylon* Kräusel & Jain. The nov. comb. *Taxaceoxylon antiquum* is based on *Torreya antiqua* Boeshore & Gray, Amer. J. Bot. 28, p. 525, textfigs. 1-14, 1936 (not validly published in Pirres and Guerra-Sommer, 2004).

Taxon name, authority	Reference	Age	Country
<i>Taxaceoxylon antiquum</i> (Boeshore & Gray) nov. comb.	Boeshore & Gray, 1936	Late Cretaceous	USA (Eastern)
<i>Taxaceoxylon biseriatum</i> Süss & Velitzelos	Süss & Velitzelos, 1994	Tertiary	Greece
<i>Taxaceoxylon jarmolenkoi</i> Shilkina	Shilkina, 1989	Early Cretaceous	Russia (Western)
<i>Taxaceoxylon liaoxiense</i> Duan	Duan, 2000	Early Cretaceous	China (Northern)
<i>Taxaceoxylon saghalienense</i> H. Nishida et Nishida	Nishida & Nishida, 1986	Late Cretaceous	Russia (Eastern)
<i>Taxaceoxylon</i> sp.	Afonin & Philippe, 2014	Early Cretaceous	Russia (Eastern)
<i>Taxaceoxylon torreyanum</i>	Shimakura, 1936	Pleistocene	Japan

(Shimakura) Kräusel & Jain			
<i>Taxoxylon</i> sp.	Dawson, 1875	Tertiary	Canada (Central)
<i>Taxoxylon</i> sp.	Mazen-Papier, 1965	Neogene	France
<i>Taxus</i> sp.	Stieber, 1955	Miocene	Hungary
<i>Taxus</i> sp.	Castañeda-Posadas et al., 2009	Miocene	Mexico

A set of woods from India is questionable. Most of them have convincing illustration for helical thickenings but poorly preserved TRP (Table 7). In 1952 Bose described *Brachyphyllum spiroxylon* from the Rajmahal Hills, Jharkhand, India. The type material is a leafy twig with *Brachyphyllum*-like foliage, 4 mm in diameter, however it is described as having a wood of the *Taxaceoxylon*-type. Unfortunately, the cross-field pitting is not preserved, and TRP is observed only in juvenile wood. Also, helical thickenings were not observed in the tangential section. These Indian woods can further be subdivided into two subgroups, one from the earliest Jurassic of Central India (Eastern Maharashtra / northern Andra Pradesh), and another from the Early Cretaceous of Western India (Jharkhand). These two groups correspond to the two main Mesozoic wood provenances in India studied to date.

Table 7

The post-Palaeozoic Indian record for fossil woods with helical thickenings. Information on location and ages has been up-dated here to allow for geographic name changes and improvements in stratigraphic ranges (Tripathi, 2008; Weishampel et al., 2004). The attribution of these fossils to Taxaceae is questionable.

Specific names	Published	Provenance	Age given in the protologue	Actual age
<i>Spiroxylon intertrappeum</i>	Prakash & Srivastava, 1959	Dhar District, Madhya Pradesh, India	Early Tertiary	Berriasian – Aptian
<i>Taxaceoxylon cupressoides</i>	Sharma, 1971	Dhokuti, Santhal Pargana, Jharkhand	Middle Jurassic	–Berriasian - Aptian
<i>Taxaceoxylon</i>	Rajanikanth &	Kota Fm, Chandrapur,	Middle Jurassic	Hettangian-

<i>sahnii</i>	Sukhdev, 1989	Eastern Maharashtra		Pliensbachian
<i>Taxaceoxylon</i> sp.	Lakhanpal et al., 1976	Kota Fm, Chandrapur, Eastern Maharashtra	Early Jurassic	Hettangian- Pliensbachian
<i>Taxaceoxylon</i> sp.	Kräusel & Jain, 1964	Rajmahal Hills, Jharkhand	Early Cretaceous	Berriasian - Aptian
<i>Taxoxylon</i> <i>rajmahalense</i>	Bhardwaj, 1952b	Kulkipahar, Amrapara, Pakur district, Santhal Parganas, Jharkhand	Intertrappean beds (Rajmahal stage) Jurassic	Berriasian - Aptian
<i>Taxoxylon</i> sp.	Mahabale, 1967	Kota Fm., Pranhita/Godavari, Andhra Pradesh	Early Jurassic	Hettangian- Pliensbachian

4 DISCUSSION

The wood fossil record includes many Mesozoic and Cenozoic specimens with some Taxaceae anatomical features. Only wood having helical thickenings and abietinean pitting (i.e. wood that is, or should be, assigned to *Taxaceoxylon*) is convincingly Taxaceae, although some other wood types (e.g. *Protocallitrixylon* and *Protelicoxylon*) may represent ancestral forms of the Taxaceae lineage. The record shows that five taxonomically and spatio-temporally well-circumscribed groups can be recognized among the Mesozoic or younger fossil tracheidoxylys with helical thickenings.

The first group has steep and wide thickenings and araucarian TRP. It occurs in Gondwana, mostly at high palaeolatitudes, and mostly in the Jurassic. It is anatomically close to the Palaeozoic *Prototaxoxylon* and will be referred to hereafter as “Mesozoic *Prototaxoxylon*”. It is possible that *Sommerxylon* is related to this group.

The two next groups have a mixed type of TRP. One (*Protocallitrixylon*) has both callitroid and helical thickenings; it is limited to the Mesozoic of far-east Asia and New-Caledonia. The fourth group (*Protelicoxylon*) is documented from Eurasia, only from the Mesozoic, and mostly from the Jurassic. Wood fossils similar to the wood of extant Taxaceae (*Taxaceoxylon*) are encountered throughout the Palearctic, from the Early Cretaceous to the Pleistocene. A fifth group, only encountered in the Mesozoic of India, has Taxaceae-like helical thickenings, and possibly mixed type of TRP (most of them have no preserved pitting).

This five group scheme is compared to the leaf and reproductive organ record for Taxaceae. This leads to the idea that only *Protelicoxylon* and *Taxoxylon* probably belong to Taxaceae. Furthermore, we propose that the helical thickenings of Taxaceae tracheids may

contribute to the family's very high resistance to hydraulic failure because – as observed in *Acer* species by Lens et al. (2011) – the more pronounced the thickenings on inner vessel walls, the more embolism resistance the species. However, the functional role of vessel wall thickening is still poorly understood and further research needs to be carried out to unravel its role in drought resistance. We here speculate that wall thickening does not play a direct role in preventing embolism formation but instead is involved in preventing xylem implosion. We then integrate the fossil record, estimated resistance to water stress and Meso-Cenozoic palaeoclimatology to create a biogeographic hypothesis.

4.1 Comparison of wood with the leaf and reproductive organ fossil record

Taylor et al. (2006) concluded that it is difficult to trace the origin of Taxaceae from the fossil record of leaf, leafy twigs or reproductive organs only. The characteristic fleshy arils have little potential for fossilization, and none have been described from the Mesozoic or Palaeozoic (non-fleshy, or perhaps immature, arils have been described from putative Middle Jurassic Taxaceae like *Marskea* and *Proteridion*). Moreover, podocarp reproductive organs (epimatia) share a similar gross morphology with that of the Taxaceae, and it is difficult to tell apart an epimatium and an aril from fossil remains only. To compound the problem, the recent suggestion that Gnetales could be sister to the Pinaceae family (Bowe et al., 2000) suggests that a fleshy structure, whatever its ontogeny, can relatively easily be invented by the gymnosperms, and could have been present in some of the numerous little-known Mesozoic gymnosperm families (e.g., Ferugliocladae or Buriadaceae). Thus a fossil fleshy aril would probably not be unequivocal evidence of Taxaceae.

Although foliage of Taxaceae is more likely to be preserved than the arils, the gross morphology of shoots and leaves of this family is little differentiated from that of several other conifer clades. As a result, leaf and leafy twig fossils are largely uninformative when cuticle is missing. The cuticle is distinctive for modern genera (Elpe et al., 2017), although Taxaceae cuticle can resemble that of some completely unrelated taxa, e.g. within the Monocots (Conran, 1997). Similarly, Jordan et al. (2013) observed Taxaceae-like cuticle in fossil *Phyllocladus* (Podocarpaceae).

Several fossil genera based on foliar specimens and with relatively well-established affinities to the Taxaceae, e.g. *Marskea*, *Palaeotaxus*, *Poteridion*, *Thomasiocladius* (Taylor et al., 2006; Xu et al., 2015) have been described from the Jurassic. These genera are only reported from Eurasian mid-palaeolatitudes. In this respect, they fit well with known spatio-temporal distribution of *Protelicoxylon*, albeit they have not yet been recorded as far east as

the latter along Tethys northern rim. The record of above mentioned foliar fossil genera starts with *Palaeotaxus* from the Earliest Jurassic (Florin, 1958), which also fits with first *Protelicoxylon*, documented from the Hettangian.

A striking feature is that by the Early Cretaceous the record of Taxaceae fossil foliage record is centered on much higher palaeolatitudes. Although there are putative records from Belgium (Alvin, 1960), UK (Watson et al., 2001) and North Carolina (Berry, 1910), the strongholds are at higher palaeolatitudes than any presumed Jurassic records of the family: Greenland (Heer, 1883), Siberia (Krassilov, 1976; Samylina, 1988; Golovneva, 1994; Bugdaeva et al., 2006), Spitzbergen (Bose & Manum, 1990), north-eastern China (Xu et al., 2015). There is thus a similar northward shift for both leaf and reproductive organ record and wood record during the Jurassic – Cretaceous interval. This shift is concomitant with abietinean TRP becoming dominant in wood.

By the Cenozoic the Taxaceae were widespread over high latitude regions of the Northern Hemisphere, with fossil foliage records in North-America (e.g. Kvaček & Rember, 2007), Europe (e.g. Givulescu, 1973; Ferguson, 1978; Ferguson et al., 1978; Kvaček, 1986; Spjut, 2007; Macovei, 2013) and Asia (Xu et al., 2015). This Cenozoic distribution fits again with that of fossil wood record.

The enigmatic *Austrotaxus* has no fossil record of any kind. As its wood is similar to that of the Podocarpaceae (Bobrov et al., 2004), isolated secondary xylem of this genus would probably be referred to *Podocarpoxyton* Gothan, which is not considered here. Thus, the fossil wood record cannot be used to improve an understanding of the biogeographic history of this taxon.

4.2 Helical thickenings, and drought resistance

Extant Taxaceae, especially *Cephalotaxus*, have a relatively high resistance to embolism (Delzon et al., 2010; Bouche et al., 2014; Figure 6). Thus, extant Taxaceae, with the notable exception of *Austrotaxus spicata*, have a lower P_{50} (i.e. greater resistance) than all Araucariaceae, all basal Cupressaceae and most species of Pinaceae and Podocarpaceae. Only a few genera of the Cupressoid and Callitroid clades of Cupressaceae have lower wood xylem P_{50} than *Cephalotaxus*: the *Callitris* clade being by far the most embolism resistant group of trees in the world (Brodribb et al., 2015; Larter et al., 2015, 2017).

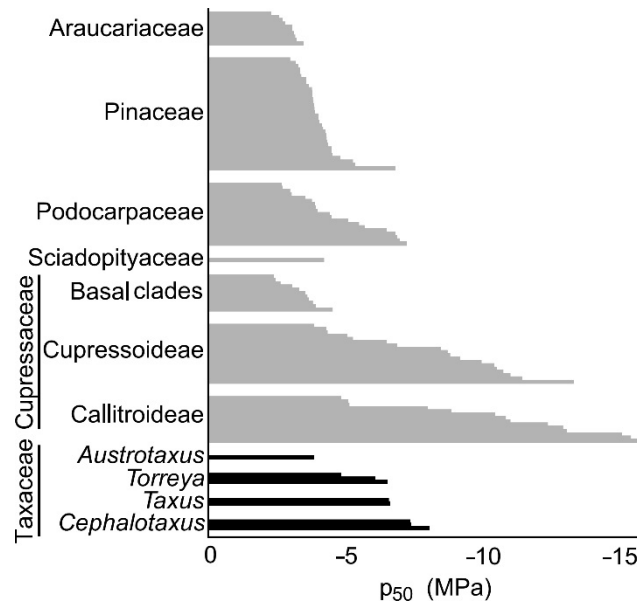


Figure 6: Mean P_{50} values for the six conifer families. For the Taxaceae the mean values are provided by genera. Most extant conifers have a P_{50} ranging between -3 and -6 MPa. Values taken from Bouche et al. (2014), except for *Austrotaxus*, which comes from Larter (2016).

Tracheids of embolism resistant species often experience low water potentials, increasing the risk of conduit implosion (collapse), that could compromise the function of the xylem. Collapse of xylem conduit walls during desiccation was reported in pine needles (Cochard et al 2004). This concept extends to conifer wood because the pressure needed to cause conduit implosion in lignified tracheids (estimated with the double cell-wall thickness) is related to embolism resistance across conifers (Bouche et al., 2014). –Furthermore, collapse of xylem conduit walls in response to desiccation has been observed in some Pinaceae wood with severe reduction lignification in their secondary walls (Barnett, 1976; Donaldson, 2002) and in pine needles (Cochard et al., 2004). Vulnerability to collapse is therefore highly related to the tracheid anatomy. *Taxus*-like helices could be interpreted as a trade-off between physiologically costly thick lignified walls, water transport and drought resistance. Tracheid helical-thickenings would allow thinner cell walled tracheids to have similar mechanical resistance to collapse (Roth-Nebelsick & Speck, 2000), while having a wider lumen, i.e. being more efficient to transport sap. In fact, xylem wall collapse has been reported in several species between the helicoidal thickening (Johnson, 1977; Turner & Somerville, 1997; Cochard et al., 2004).

It is striking that both extant conifer taxa (Taxaceae and Callitroideae) with abundant tertiary thickenings in their woods have high resistance to embolism (Fig. 6). Furthermore, the only genus of Taxaceae without tertiary helical thickenings, *Austrotaxus*, is the most

vulnerable species to embolism in the family. This findings suggest that helical thickenings may play a role in preventing conduit implosion in high resistant species to embolism.

The high resistance to embolism is interesting because extant Taxaceae are rather mesophytic trees and shrubs, which may also be the case for most of their Cenozoic ancestors (Ferguson et al., 1978). However, this is in line with other physiological adaptations to drought observed in the Taxaceae (Hoffman et al., 1999; Feucht et al., 2012). Extant Taxaceae trees and shrubs are all shade tolerant. Their resistance to drought, together with their shade tolerance strategy, might have allowed Taxaceae to establish under angiosperm-dominated canopies.

4.3 A palaeobiogeographical scenario for the Taxaceae

Phylogeny of the Taxaceae genera and the supposedly monotypic family Cephalotaxaceae has been extraordinarily controversial (Cheng et al., 2000). Molecular phylogenies now converge to give a more consensual image (Fig. 7). Taxaceae are considered monophyletic, splitting from the sister-group, the Cupressaceae, during the Late Triassic or earliest Jurassic. *Cephalotaxus* branched during the Early to Middle Jurassic and the division between the two remaining clades of Taxaceae occurred during the Middle to Late Jurassic, one clade containing *Torreya* and *Amentotaxus*, the other *Austrotaxus*, *Pseudotaxus* and *Taxus* (Cheng et al., 2000; Renner, 2009; Leslie et al., 2018).

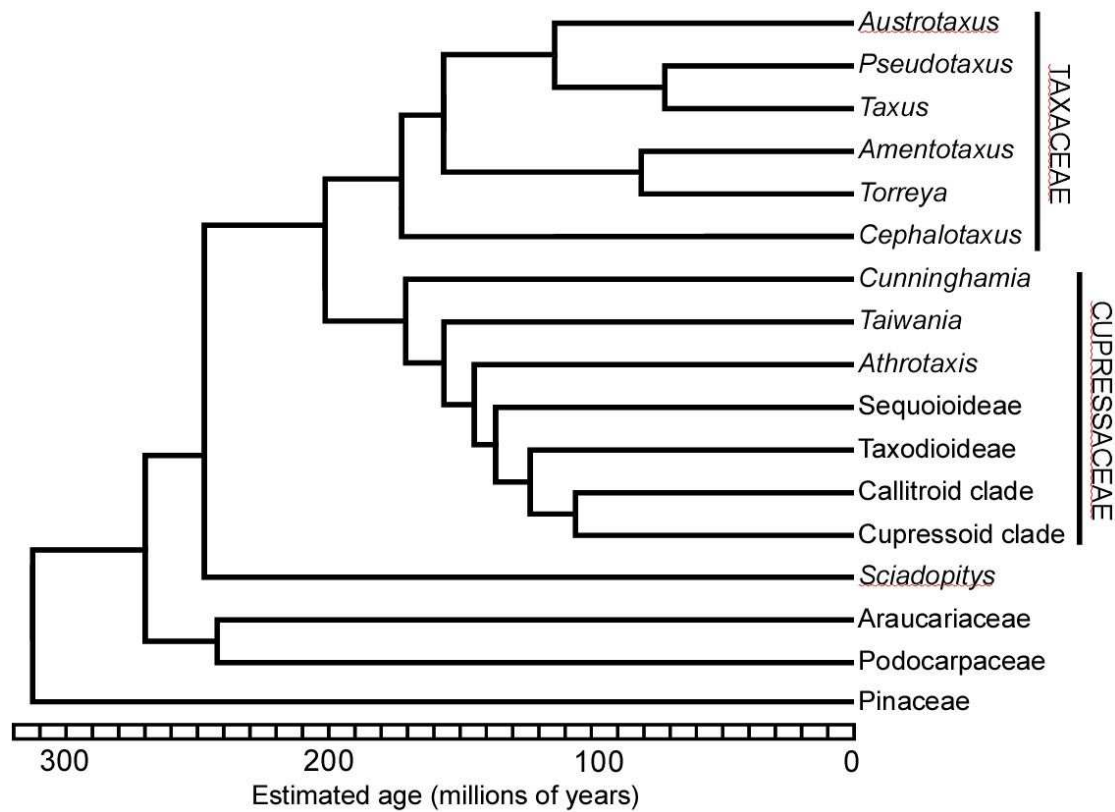


Figure 7: Dated molecular phylogeny used to discuss Taxaceae fossil wood record, based on Leslie et al. (2018).

If the Mesozoic *Prototaxoxyla* are not considered safe evidence of Taxaceae, the fossil wood record fits well with the image drawn by molecular phylogeny. With the Hettangian (Earliest Jurassic, *ca.* 200 Ma) as its first appearance date, *Protelicoxylon* fits with a first radiation of the Taxaceae within the Late Triassic / Early Jurassic. Accordingly, from the fossil wood record it can be hypothesized that Taxaceae appeared in Western Europe at the T/J boundary.

Evolutionary ecophysiology suggests that Triassic conifer stem groups had a limited resistance to embolism (Pittermann et al., 2012; Larter et al., 2017). It further suggests that resistance gradually increased for the Taxaceae during the Jurassic and likely had reached modern values by the end of the Cretaceous at 65 Ma (Larter, 2016). This age fits well with our taxonomical inferences, with intermediate and untypical woods classified here as *Protelicoxylon* appearing during the Jurassic, and typical *Taxaceoxylon* appearing during the Early Cretaceous, at higher and drier palaeolatitudes. During all the Mesozoic, at least, Taxaceae family seems to have evolved under a strong constraint to become more drought resistant. This evolution was parallel to a transition from a mixed type of TRP to an abietinean TRP. It is probable that this change in the TRP had consequences on conduction.

This northward shift of the (*Protelicoxylon* + *Taxaceoxylon*) group during the Jurassic – Early Cretaceous interval fits well with a well-documented global poleward shift of the at least seasonally dry temperate climate zone (Hallam, 1985).

According to the phylogeny of Fig. 7 (based on Leslie et al., 2018) the stem group of the most embolism resistant genus of Taxaceae, *Cephalotaxus*, evolved at the end of the Early Jurassic and the crown group in the late Cenozoic. So the highly resistant wood may have evolved any time in this period. Thus, the Cretaceous record is entirely consistent with late evolution of resistance.

Austrotaxus radiated during the Early Cretaceous and remained highly isolated (Leslie et al., 2018). Thus, it is improbable that *Austrotaxus* is related to the Triassic *Protocallitrixylon* described from New-Caledonia by Vozenin-Serra & Salard-Chelbodaëff (1992). It might be derived from *Protocallitrixylon* which occurred during the Jurassic in South-Eastern Asia, however, the possibility of terrestrial species migration along the Eastern Tethys at that time is controversial (Vozenin-Serra, 1977). *Austrotaxus* is clearly divergent from the rest of the Taxaceae, in both wood anatomy and resistance to embolism, and also in the diffuse type of branching and plagiotropic branch growth (Chomicki et al., 2017). According to the phylogeny of Leslie et al. (2012) or Lu et al. (2014), both the Taxaceae-type wood anatomy and xylem resistance to embolism were either lost secondarily in *Austrotaxus* or evolved convergently in two clades (Fig. 7). It is noteworthy that it is endemic to New-Caledonia, a center of diversity for Araucariaceae (Farjon 2010), a family with a high vulnerability to embolism (Figure 6). In no fossil flora is *Taxaceoxylon* found associated with *Agathoxylon*, the wood fossil genus fitting with modern Araucariaceae, as if in the past these two groups always had different ecological requirements. The extant *Austrotaxus* case opens the possibility that some fossil woods assigned to *Podocarpoxylon* (e.g.), and possibly associated to *Agathoxylon*, might be cryptic Taxaceae woods lacking tertiary helical thickenings. The *Austrotaxus* thinner ray-cell walls, as compared to the other family members, might also be in line with a lower resistance to embolism.

If the *Cephalotaxus* Early Jurassic divergence from the rest of the Taxaceae is confirmed, it implies that abietinean TRP evolved at least twice within the Taxaceae: once in this genus and a second time in its sister group, the other Taxaceae. The Early Cretaceous age of the Cambodian *Protelicoxylon* (Table 5) is little substantiated, and might well be Middle to late Jurassic (Philippe et al., 2004). If so, the transition of the mixed type to the abietinean type of TRP in the *Cephalotaxus* sister-clade, as documented by the fossil record, would be more or

less contemporaneous with the split of the two branches (*Torreya* + *Amentotaxus* and *Austrotaxus* + *Pseudotaxus* + *Taxus*). The Late Jurassic, during which this split might have taken place (Fig. 7), is well known as a time of global drying of Northern Hemisphere climates.

Taxaceae have probably been through several ecological bottle-necks during the Jurassic, which selected embolism-resistant taxa. This resistance was maintained when they acquired their typical wood, i.e. *Taxaceoxylon* features. This genus first appeared during the Early Cretaceous, a time when it was to be found in eastern continental Eurasia only, at relatively high palaeolatitudes. This area is known to have been relatively dry at that time (Oh et al., 2011), with strongly influences of continental drought and the existence of an eastern coastal Cordillera. No Araucariaceae-like woods (i.e. genus *Agathoxylon*) are reported from this area at that time, while this type of wood was otherwise so common worldwide, possibly because of continental drought. Later, during the Late Cretaceous, at a time when North-America and Western Europe climates became more continental (Wolfe & Upchurch, 1987), *Taxaceoxylon* spread to these two areas. It persisted there through the Cenozoic, and until now, with modern Taxaceae spanning most of the temperate boreal area, except for the high-latitudes that were probably their Cretaceous cradle.

ACKNOWLEDGMENTS

The authors would like to thank Marion Bamford (University of Witwatersrand) for information about the age of some woods; Kim Kyungsik (Chonbuk University) and Nishida Harufumi (Chuo University) for their much appreciated help in Japan; Maria Barbacka (Hungarian natural history Museum), Chinnappa Chopparapu (Birbal Sahni Institute), Hervé Cochard (INRA, Clermont-Ferrand), Alexandra Crisafulli (National University of the North-East), David K. Ferguson (Vienna University, Austria), Rafael Herbst (Argentina), Andrew Leslie (Brown University, USA) and Herbert Süss (Germany) for valuable discussions. Two anonymous reviewers improved the original draft, as well as editor M.A. Gandolfo. This a contribution to the project RFBR № 17-04-01582 «The Jurassic and Cretaceous floras of the south of Siberia and the Russian Far East: taxonomic, paleoecological and phytogeographical aspects» (led by M. Afonin). This work was partly supported by JSPS KAKENHI Grant Number JP26923006 (to K.Terada).

LITERATURE

599 Aberhan, M., Bussert, R., Heinrich, W.D., Schrank, E., Schultkal, S., Sames, B., Kriwet, J.,
 600 Kapilima, S. 2002. Palaeoecology and depositional environments of the Tendaguru Beds
 601 (Late Jurassic to Early Cretaceous, Tanzania). *Mitteilungen der Museum für Naturkund in*
 602 *Berlin, Geowissenschaft Reihe* 5,19-44.

603 Afonin, M., Philippe, M., 2014. Fossil woods from the Lower Cretaceous (Albian) of
 604 Kamchatka Peninsula, Russian Far East. *Cretaceous Research* 50, 110-119.

605 Agashe S.N., Shashi Kumar, M.S., 2002. Record of new species of *Prototaxoxylon* from
 606 Indian Lower Gondwana. *Current Science* 82,138-140.

607 Alvin, K.L., 1960. On the seed *Vesquia tournaisii* C.E. Bertrand from the Belgian Wealden.
 608 *Annals of Botany* 24, 508-515.

609 Araujo, K.C.O., Guerra Sommer, M., Medeiros, M.A., Girnos, E.C., Schmidt, I.D., 2011.
 610 Lenhos de coníferas do Mesocretáceo do Norte do Maranhão, Brasil. *Revista brasileira de*
 611 *paleontologia* 14, 29-38.

612 Bamford, M., Philippe, M., Thévenard, F., 2016. Long overdue extinction of the
 613 Protopinaceae. *Review of Palaeobotany and Palynology* 234, 25-30.

614 Barbacka, M., Philippe, M., 1997. A reappraisal of the Jurassic woods from Hungary.
 615 *Annales Historico-naturales Musei Nationalis Hungarici* 89,11-22.

616 Barnett, J.R., 1976. Rings in collapsed cells in *Pinus radiata* stemwood from lysimeter-grown
 617 trees subjected to drought. *New-Zealand Journal of Forestry Sciences* 6, 461-465.

618 Bateman, R.M., Hilton, J., 2009. Palaeobotanical systematics for the phylogenetic age:
 619 applying organ–species, form–species and phylogenetic species concepts in a framework
 620 of reconstructed fossil and extant whole–plants. *Taxon* 58, 1254-1280.

621 Berry, E.W., 1910. Geologic relations of the Cretaceous floras of Virginia and North
 622 Carolina. *Bulletin of the Geological Society of America* 20, 655-659.

623 Berthelin, M., Broutin, J., Kerp, H., Crasquin-Soleau, S., Platel, J.-P., Roger, J., 2003 The
 624 Oman Gharif mixed paleoflora: a useful tool for testing Permian Pangea. *Palaeogeography,*
 625 *Palaeoclimatology, Palaeoecology* 196, 85-98.

626 Bhardwaj, D.C., 1952a. On some interesting Jurassic woods from Rajmahal Hills, Bihar. Pp.
 627 31-32 in *Proceedings of the 39th. Indian Science Congress. Indian Science Congress*
 628 *Association, Calcutta, India.*

629 Bhardwaj, D.C., 1952b. On a new species of *Taxoxylon* Unger from the Jurassic of Rajmahal
 630 Hills, India. *Lloydia* 15, 234-240.

631 Blackman, C.J., Brodribb, T.J., Jordan, G.J., 2010. Leaf hydraulic vulnerability is related to
 632 conduit dimensions and drought resistance across a diverse range of woody angiosperms.

633 New Phytologist 188,1113-1123.

634 Bobrov, V.F.C.H., Melikian, A.P., Romanov, M.S., Sorokin, A.N., 2004. Seed morphology
635 and anatomy of *Austrotaxus spicata* (Taxaceae) and its systematic position. Botanical
636 Journal of the Linnean Society 145, 437-443.

637 Bodor, E.R., Barbacka, M., 2012. The remarkable world of the ferns in the Mecsek Coal
638 Formation with special focus on the genera *Todites* and *Cladophlebis* (SW Hungary). E-
639 acta naturalia pannonica 3,1-10.

640 Boeshore, I., Gray, W.D., 1936. An Upper Cretaceous wood, *Torreya antiqua*. American
641 Journal of Botany 28, 524-528.

642 Borkar, V.D., 1987. Stratigraphic position and significance of *Prototaxoxylon intertrappeum*
643 (Prakash & Srivastava) and other fossil woods from Man River Section, Dhar District,
644 Madhya Pradesh. Geophytology 17, 118-119.

645 Bose, M.N., 1952. *Brachyphyllum spiroxylum* sp. nov. from the Rajmahal hills, India. Journal
646 of the Indian botanical society 31, 287-296.

647 Bose, M.N., Manum, S.B., 1990. Mesozoic conifer leaves with *Sciadopitys*-like stomatal
648 distribution. A re-evaluation based on fossils from Spitsbergen, Greenland and Baffin
649 Island. Norsk Polarinstitut Skrifter 192, 1-81.

650 Bouche, P.F., Larter, M., Domec, J.-C., Burlett, R., Gasson, P., Jansen, S., Delzon S., 2014. A
651 broad survey of xylem hydraulic safety and efficiency in conifers. Journal of Experimental
652 Botany 65, 4419-4431.

653 Boura, A, Pons, D., Vozenin-Serra, C., Phú My, B., 2013. Mesozoic fossil wood of Kiên
654 Giang Province, southwestern Vietnam. Palaeontographica, Abt. B 290, 11-40.

655 Bowe, L.M., Coat, G., Pamphilis C. de, 2000. Phylogeny of seed plants based on all three
656 genomic compartments: Extant gymnosperms are monophyletic and Gnetales' closest
657 relatives are conifers. Proceedings of the National academy of sciences USA 97, 4092-
658 4097.

659 Boyd, J.D., 1973. Helical fissures in compression wood cells: causative factors and mechanics
660 of development. Wood science and technology 7: 92-111.

661 Brea, M., Bellosi, E., Krause, M., 2009. *Taxaceoxylon katuatenkum* sp. nov. en la Formación
662 Koluel-Kaike (Eoceno inferior - medio), Chubut, Argentina: un componente de los
663 bosques subtropicales paleógenos de Patagonia. Ameghiniana 46, 127-140.

664 Brongniart, A.T., 1828. Prodrome d'une histoire des végétaux fossiles. Levrault, Strasbourg,
665 France.

666 Brodribb, T.J., McAdam, S.A.M. Jordan, G.J., Martins, S.C.V., 2015. Conifer species adapt to

- low-rainfall climates by following one of two divergent pathways. Proceedings of the national academy of Sciences USA 111, 14489-14493.
- Bugdaeva, E.V., Volynets, E.B., Golozubov, V.V., Markevich, V.S., Amelchenko, G.L., 2006. Flora and geological events of the Middle Cretaceous Period: Alchan River Basin, Primorye. Dalnauka, Vladivostok, Russia (in Russian).
- Caminos, R, Zamuner, A.B., Limarino, C.O., Fauqué, L., 1995. Triásico superior fosilífero en la Precordillera riojana. Revista de la Asociación Paleontológica Argentina 50, 262-265.
- Castañeda-Posadas, C., Calvillo-Canadell, L., Cevallos-Feriz, S.R.S., 2009. Woods from Miocene sediments in Panotla, Tlaxacala, Mexico. Review of Palaeobotany and Palynology 156, 494-506.
- Chaw, S.M., Long, H., Wang, B.S., Zharkikh, A., Li, W.H., 1993. The phylogenetic position of Taxaceae based on 18s rRNA sequences. Journal of Molecular Evolution 37, 624-630.
- Chaw, S.M., Sung, H.M., Long, H., Zharkikh, A., Li, W.H., 1995. The phylogenetic position of the conifer genera *Amentotaxus*, *Phyllocladus* and *Nageia* inferred from 18S r RNA sequences. Journal of Molecular Evolution 41, 224-230
- Cheng, Y., Nicolson, R.G., Tripp, K., Chaw, S.H., 2000. Phylogeny of Taxaceae and Cephalotaxaceae genera inferred from chloroplast matK gene and nuclear rDNA ITS region. Molecular phylogenetics and evolution 14, 353-365.
- Chomicki, G, Coiro, M. Renner, S.,S., 2017. Evolution and ecology of plant architecture: integrating insights from the fossil record, extant morphology, developmental growth and phylogenies. Annals of Botany 120, 855-891.
- Cluzel, D., Maurizot, P., Collt, J., Sevin, B., 2012. An outline of the geology of New Caledonia; from Permian – Mesozoic Southeast Gondwanaland active margin to Cenozoic obduction and supergene evolution. Episodes 35, 72-86.
- Cochard, H., Froux, F., Mayr, S., Coutand, C., 2004. Xylem Wall Collapse in Water-Stressed Pine Needles. Plant Physiology 134, 401-408.
- Conran, J.G., 1997. *Paracordyline kerguelensis*, an Oligocene monocotyledon macrofossil from the Kerguelen Islands. Alcheringa 21, 129-140.
- Crawley, M., 2001. Angiosperm woods from British Lower Cretaceous and Palaeogene deposits. Palaeontology. Special Papers 66, 1-100
- Dawson, J.W., 1873. On the fossil plants from British Columbia. Geological Survey of Canada, Report Progress 1872-1873, 66-71.
- Dawson, J.W., 1875. Note on the plants collected by G.M. Dawson from the lignite Tertiary deposits near the forty-ninth parallel. Pp. 327-331 in British North America Boundary

701 Commission (ed.), Report on the geology and resources of the region in the vicinity of the
 702 forty-ninth parallel.
 703 Delzon, S., Douthe, C., Sala, A., Cochard, H., 2010. Mechanism of water-stress induced
 704 cavitation in conifers: bordered pit structure and function support the hypothesis of seal
 705 capillary-seeding. *Plant Cell & Environment* 33, 2101-2111
 706 Donaldson, L.A., 2002. Abnormal lignin distribution in wood from severely drought stressed
 707 *Pinus radiata* trees. *IAWA Journal* 23, 161-178.
 708 Duan, S.H., 2000. Several fossil woods from Mesozoic of western Liaoning Province,
 709 Northeast China. *Acta Botanica Sinica* 42, 207-213.
 710 Elpe, C., Knopff, P., Stützel, T., Schulz, C., 2017. Cuticle micromorphology and the evolution
 711 of characters in leaves of *Taxaceae s.l.* *Botanical Journal of the Linnaean Society*, 184,
 712 503-517.
 713 Evans, W.P., 1928. Microstructure of New-Zealand lignites. Part II Lignites subjected to the
 714 influence of igneous intrusions – continued. B Mount Torless Co.'s mine, Broken River,
 715 North Canterbury. *The New-Zealand Journal of science and technology* 9, 339-359.
 716 Fakhr, M.S., Marguerier, J., 1977. *Prototaxoxylon feriziense* n.sp., bois fossile du Jurassique
 717 moyen de l'Iran. *Mémoires de la section des sciences du Comité des travaux historiques et*
 718 *scientifiques (Paris)* 5, 146-150.
 719 Farjon, A., 2010. A handbook of the World's Conifers. Brill, Leiden, Netherlands.
 720 Farjon, A., Filer, D., 2013. An atlas of the world's conifers. Brill, Leiden, Netherlands.
 721 Ferguson, D.K., 1978. Some current research on fossil and recent taxads. Review of
 722 Paleobotany and Palynology 26, 213-226.
 723 Ferguson, D.K., Jähnichen, H., Alvin, K.L., 1978. *Amentotaxus* Pilger from the European
 724 Tertiary. *Feddes Repertorium* 89, 379-410.
 725 Feucht, W., Treutter, D., Dithmar, H., Polster, J., 2012. Loss of nuclear flavanols during
 726 drought periods in *Taxus*. *Plant Biology* 15, 462-470.
 727 Fyhn, M.B.W., Petersen, H.K., Mathiesen, A., Nielsen, L.H., Pedersen, S.A.S., Lindstrom, S.,
 728 Bojesen-Koefoed, J.A., Abatzis, I., Boldreel, L.O., 2010. Vietnamese sedimentary basins:
 729 Geological evolution and petroleum potential. *Geological survey of Denmark and*
 730 *Greenland bulletin* 20, 91-94.
 731 Florin, R., 1948. On the morphology and relationships of the *Taxaceae*. *Botanical Gazette*
 732 110, 31-39.
 733 Florin, R., 1958. On Jurassic taxads and conifers from north-western Europe and eastern
 734 Greenland. *Acta Horti Bergiani* 17, 1-408.

- 735 Florin, R., 1963. The distribution of conifer and taxad genera in time and space. *Acta Horti*
736 *Bergiani* 20, 121-312.
- 737 Ghimire, B., Heo, K., 2014. Cladistic analysis of Taxaceae s. l. *Plant Systematics and*
738 *Evolution* 300, 217-223.
- 739 Ghimire, B., Lee, C., Heo, K., 2015. Comparative wood anatomy of Taxaceae. *Australian*
740 *Systematic Botany* 28, 160-172.
- 741 Givulescu, R., 1973. Ein Beitrag zur Kenntnis der fossilen Flora des Schilltals. *Mémoires*
742 *géologiques de l'Institut (Bucuresti)* 19, 7-30.
- 743 Gnaedinger, S., Herbst, R. 2006. El género *Prototaxoxylon* Kräusel y Dolianiti (Taxales) de la
744 Formación La Matilde (Jurásico Medio), Gran Bajo de San Julián, Santa Cruz, Argentina.
745 *Ameghiniana* 43, 123-138.
- 746 Golovneva, L.B., 1994. Maastrichtian-Danian floras of Koryak Upland. BIN RAN, St.
747 Petersburg, Russia (in Russian).
- 748 Göppert, H.R., 1841. *Taxites scalariformis*, eine neue Art fossilen Holzes. *Archiv für*
749 *Mineralogie und Geognosie* 15, 727-730.
- 750 Göppert, H.R., 1845. Über die fossile Flora der mittleren Juraschichten in Oberschlesien.
751 *Jahrbericht der schlesische Gesellschaft für Vaterländische Kultur* 23, 139-150.
- 752 Göppert, H.R., 1850. Monographie der fossilen Coniferen. *Verhandelingen van de*
753 *Hollandsche Maatschappij der Wetenschappen te Harlem* 12, 1-359.
- 754 Göppert, H.R., Berendt, G.C., 1845. Der Bernstein und die in ihm befindlichen Pflanzenreste
755 der Vorwelt. Nicolas, Berlin, Germany.
- 756 Gothan, W., 1905. Zur Anatomie lebender und fossiler Gymnospermen-Hölzer.
757 *Abhandlungen zur preussischen geologische Landesanstalt* 44, 1-108.
- 758 Greguss, P., 1961. Permische fossile Hölzer aus Ungarn. *Palaeontographica*, Abt. B 109, 131-
759 146.
- 760 Greguss, P., 1967. Fossil Gymnosperm Woods in Hungary from the Permian to the Pliocene.
761 *Akadémiai Kiadó, Budapest, Hungary*.
- 762 Hallam, A., 1985. A review of Mesozoic climates. *Journal of the geological society (London)*
763 142, 433-445.
- 764 Hao, D.C., Xiao, P.G., Huang, B.L., Ge, G.B., Yang, L., 2008. Interspecific relationships and
765 origins of Taxaceae and Cephalotaxaceae revealed by partitioned Bayesian analyses of
766 chloroplast and nuclear DNA sequences. *Plant Systematics and Evolution* 276, 89-104.
- 767 Harland, M., Francis, J.E., Beerling, D.J., Brentnall, S.J., 2007. Cretaceous (Albian–Aptian)
768 conifer wood from Northern Hemisphere high latitudes: forest composition and

- 769 palaeoclimate. Review of Palaeobotany and Palynology 143, 167-196.
- 770 Hartig, T., 1848. Beiträge zur Geschichte der Pflanzen und zur Kenntnis der norddeutschen
771 Braunkohlen-Flora. Botanische Zeitung 6, 122–128, 137–141, 166–172 and 185–190.
- 772 He, D., 1995. The coal forming plants of Late Mesozoic in Dan Hinggan Mountains. China
773 Coal industry Publishing House, Beijing, China (in Chinese with English abstract).
- 774 Heer, O. 1883. Flora Fossilis Grönlandica. Die Fossile Flora Grönlands. Part II. Flora Fossilis
775 Arctica. Die Fossile Flora der Polarländer. J. Wurster, Zürich, Switzerland.
- 776 Hickey, L.J., Hu, S., Skinner, B.J., 2011. A new genus of silicified conifer wood from the late
777 Triassic of Connecticut. American Journal of Science 311, 608-631.
- 778 Hoffman, A., Shock, C., Feibert, E., 1999. Taxane and ABA production in yew under
779 different soil water regimes. Hortscience 34, 882-885.
- 780 Houlbert, C., 1910. Les bois des faluns de Touraine. La feuille des jeunes naturalistes 473,
781 70-76.
- 782 IAWA Committee, 2004. IAWA list of microscopic features for softwood identification.
783 IAWA Journal 25, 1-70.
- 784 Johnson, R.P.C. 1977. Can cell walls bending round xylem vessels control water flow? Planta
785 136, 187-194.
- 786 Jordan, G.J., Carpenter, R.J., Bannister, J.M., Lee, D.E., Mildenhall, D.C., Hill, R.S., 2011.
787 High conifer diversity in Oligo-Miocene New Zealand. Australian Systematic Botany 24,
788 121-136.
- 789 Kahlert, E, Schultka, S., Süß, H., 1999. Die mesophytische Flora der Saurierlagerstätte am
790 Tendaguru (Tansania). Erste Ergebnisse. Mitteilungen Museum Naturkunde Berlin,
791 Geowissenschaftliche Reihe 2, 185-199.
- 792 Krassilov, V.A., 1967. Early Cretaceous flora of Southern Primorye and its significance for
793 stratigraphy. Nauka, Moscow, Russia (in Russian).
- 794 Krassilov, V.A., 1976. Tsagayan flora of the Amur Region. Nauka, Moscow, Russia (in
795 Russian).
- 796 Kraus, G., 1887. Beiträge zur Kenntnis fossiler Hölzer. IV. Kritik fossiler Taxaceenhölzer.
797 Abhandlungen der Naturforschenden Gesellschaft zu Halle 17, 41-45.
- 798 Kräusel, R., 1919. Die fossilen Koniferenhölzer (unter Auschluss von *Araucarioxylon* Kraus).
799 I: Versuch einer monographischen Darstellung. Palaeontographica 62, 185-284.
- 800 Kräusel, R., 1920. Nachträge zur Tertiärflora Schlesiens. II Braunkohlenhölzer. Jahrbuch der
801 preußischen geologischen Landesanstalt 39 (1918), 418-450.
- 802 Kräusel, R., 1949. Die fossilen Koniferenhölzer (unter Auschluss von *Araucarioxylon* Kraus).

803 II, Kritische Untersuchungen zur Diagnostik lebender und fossiler Koniferenhölzer.
804 Palaeontographica 89, 81-203.

805 Kräusel, R., Dolianiti, E., 1958. Gymnospermen Hölzer aus dem Paläozoikum Brasiliens.
806 Palaeontographica, Abt. B 104, 115-137.

807 Kräusel, R., Jain, K.P., 1964. New fossil coniferous woods from the Rajmahal Hills, Bihar,
808 India. The Palaeobotanist 12, 59-67.

809 Kvaček, Z., 1986. Tertiary taxads of NW Bohemia. Acta Universitatis Carolinae, Geologica
810 4, 471-491.

811 Kvaček, Z., Rember, W.C., 2007. *Calocedrus robustior* (Cupressaceae) and *Taxus schornii*
812 (Taxaceae): two new conifers from the middle Miocene Latah Formation of northern
813 Idaho. Paleobios 27, 68-79.

814 Lakhanpal, R.N., Maheshwari, H.K., Awasthi, N., 1976. A catalogue of Indian fossil plants.
815 Birbal Sahni Institute of Palaeobotany, Lucknow, India.

816 Larter, M., Brodribb, T., Pfautsch, S., Burlett, R., Cochard, H., Delzon, S., 2015. Extreme
817 aridity pushes trees to their physical limits. Plant Physiology 168, 804-807.

818 Larter, M., 2016. Evolution de la résistance à la cavitation chez les conifères. Unpublished
819 PhD thesis, Université de Bordeaux, France.

820 Larter, M., Pfautsch, S., Domec, J.-C., Trueba, S., Nagalingum, N., Delzon, S., 2017. Aridity
821 drove the evolution of extreme embolism resistance and the radiation of conifer genus
822 *Callitris*. New Phytologist 215, 97–112

823 Leslie, A.B., Beaulieu, J.M., Rai, H.S., Crane, P.R., Donoghue, M.J., Mathews, S., 2012.
824 Hemispherescale differences in conifer evolutionary dynamics. Proceedings of the
825 National Academy of Sciences USA 109, 16217-16221.

826 Leslie, A.B., Beaulieu, J., Homan, G., Campbell, C.S., Mei, W.B., Raubeson, L.R., Mathews,
827 S., 2018. An overview of extant conifer evolution from the perspective of the fossil record.
828 American Journal of Botany 105, 1531-1544.

829 Lester, E., Ruttenberg, B.I., Gaines, S.D., Kinlan, B.P., 2007. The relationship between
830 dispersal ability and geographic range size. Ecology Letters 10, 745-758.

831 Li, J., Davis, C.C., Del Tredici, P., Donoghue, M., 2001. Phylogeny and biogeography of
832 *Taxus* (Taxaceae) inferred from sequences of the internal transcribed spacer region of
833 nuclear ribosomal data. Harvard papers in Botany 6, 267-274.

834 Lu, Y., Ran, J.H., Guo, D.M., Yang, Z.Y., Wang, X.Q., 2014. Phylogeny and Divergence
835 Times of Gymnosperms Inferred from Single-Copy Nuclear Genes. PLoS ONE 9, e107679.
836 doi:10.1371/journal.pone.0107679

- 837 Lutz, A., Crisafulli, A., Herbst, R., 1999. Gymnospermous woods from the Upper Triassic of
838 northern Chile. *The Palaeobotanist* 48:31-38.
- 839 Macovei, G., 2013. A revision of Taxaceae remains of the late Miocene fossil flora from
840 Chiuzbaia, Maramureş County, Romania. *Carpathian Journal of Earth and Environmental*
841 *Sciences* 8, 245-248
- 842 Mahabale, T.S., 1967. Mesozoic floras of India: the Kota-Maleri stage. *The Palaeobotanist*
843 15, 308-313.
- 844 Mazen-Papier, M.T., 1965. Sur quelques bois fossiles de la région niçoise. *Géologie alpine*
845 41, 133-139.
- 846 Menge, A., 1858. Beiträge zur Bernsteinflora. *Schriften der Naturforschenden Gesellschaft in*
847 *Danzig* 6, 1-18.
- 848 Mehta, R., 1952. *Spiroxylon indicum* sp. nov. a Taxinean wood from the Lower Gondwana of
849 India. *The Palaeobotanist* 1, 330-334.
- 850 Mý, B., Linh, T.H., Giáp, K.V., Khám, H.D., 2002. Red beds in the Thổ Chu archipelago,
851 Kiên Giang province. *Journal of Geology, B (Vietnam)* 19-20, 268.
- 852 Nadjafi, A., 1982. Contribution à la connaissance de la flore ligneuse du Jurassique d'Iran.
853 Unpublished PhD thesis, Université Paris VI, France.
- 854 Nishida, M., 1973. On some petrified plants from the Cretaceous of Choshi, Chiba Prefecture
855 VI. *The Botanical Magazine (Tokyo)* 86, 189-202.
- 856 Nishida, M., Nishida, H., 1986. Structure and affinities of the petrified plants from the
857 Cretaceous of Northern Japan and Saghalien IV, Petrified plants from the Upper
858 Cretaceous of Saghalien (2). *The Botanical Magazine (Tokyo)* 99, 205-212.
- 859 Nishida, M., Oishi, T., 1982. Some petrified plants from the Cretaceous of Kwanto
860 Mountains, central Japan (2). *The Journal of Japanese Botany* 57, 343-348.
- 861 Oh, C., Legrand, J., Kim, K.S., Philippe, M., Paik, I.S., 2011. Fossil wood diversity gradient
862 and Far-East Asia palaeoclimatology during the Late Triassic – Cretaceous interval.
863 *Journal of Asian Earth Sciences* 40, 710-721.
- 864 Page, C.N., 1990. Taxaceae. Pp. 348-353 in Kubitzki K. (ed.), *The families and genera of*
865 *vascular plants*. Springer, Berlin, Germany.
- 866 Philippe, M., 1995. Bois fossiles du Jurassique de Franche-Comté (nord-est de la France):
867 systématique et biogéographie. *Palaeontographica, Abt. B* 236, 45-103.
- 868 Philippe, M., Bamford, M.K., 2008. A key to morphogenera used for Mesozoic conifer-like
869 woods. *Review of Palaeobotany and Palynology* 148, 184-207.
- 870 Philippe, M., Zijlstra, G., Barbacka, M., 1999. Greguss form-genera of homoxyleous fossil

871 woods: a taxonomical and nomenclatural review. *Taxon* 48, 667-676.

872 Philippe, M., Bamford, M.K., 2009. Houlbert's types for fossil wood: lectotypification and
873 taxonomic reappraisal of *Abietoxylon*, *Ambaroxylon* and *Taxoxylon*. *Taxon* 58, 1349-1356.

874 Philippe, M., Suteethorn, V., Lutat, P., Buffetaut, E., Cavin, L., Cuny, G., Barale, G., 2004.
875 Stratigraphical and palaeobiogeographical significance of fossil wood from the Mesozoic
876 Khorat Group of Thailand. *Geological Magazine* 141, 319-328.

877 Philippe, M., Barbacka, M., Gradinaru, E., Iamandei, E., Iamandei, S., Kázmér, M., Popa, M.,
878 Szakmány, G., Tchoumatchenco, P., Zatoń, M., 2006. Fossil wood and Mid-Eastern
879 Europe terrestrial palaeobiogeography during the Jurassic-Early Cretaceous interval.
880 *Review of Palaeobotany and Palynology* 142, 15-32.

881 Philippe, M., Boura, A., Oh, C.W., Pons, D., 2014. *Shimakuroxylon* a new homoxylous
882 Mesozoic wood genus from Asia, with palaeogeographical and palaeoecological
883 implications. *Review of Palaeobotany and Palynology* 204, 18-26.

884 Philippe, M., Puijalon, S., Suan, G., Mousset, S., Thévenard, F., Mattioli, E., 2017. The
885 palaeolatitudinal distribution of fossil wood genera as a proxy for European Jurassic
886 terrestrial climate. *Palaeogeography, Palaeoclimatology, Palaeoecology* 466, 373-381.

887 Phillips, E.W.J., 1948. Identification of softwoods by their microscopic structure. *Forest*
888 *Products Research Bull. No. 22*. HMSO Department of Scientific and Industrial Research.

889 Pires, E.E., Guerra-Sommer, M. 2004. *Sommerxylon spiralosus* from Upper Triassic in
890 southernmost Paraná Basin (Brazil): a new taxon with taxacean affinity. *Anais da Academia*
891 *Brasileira de Ciências (Rio de Janeiro)* 76, 595-609.

892 Pittermann, J., Stuart, S.A., Dawson, T.E., Moreau, A., 2012. Cenozoic climate change
893 shaped the evolutionary ecophysiology of the Cupressaceae conifers. *Proceedings of the*
894 *national academy of sciences USA* 109, 9647-9652.

895 Prakash, U., Srivastava, S.K., 1959. On a new species of *Spiroxylon*, *S. intertrappeum* from
896 the Deccan Intertrappean beds of district Dhar in Madhya Pradesh. *Current Science* 28,
897 446-448.

898 Prakash, U., Srivastava, S.K., 1962. On a gymnospermous fossil woods from Sitapuri District
899 Dhar in Madhya Pradesh. *The Palaeobotanist* 10, 10-17.

900 Prakash, U., Du, N.Z., Tripathi, P.P., 1995. Fossil woods from the Miocene sediments of
901 China with remarks on environmental implications of Miocene floras of the region. Pp.
902 341—360 in Pant D.D. (ed.), *Global environment and diversification of plants through the*
903 *geological time (Birbal Sahni Centenary Volume)*. South Asian publishers, Allahabad,
904 India.

- 905 Prasad, M.N.V., 1986. Xylotaphoflora of the Kamthi Formation, Indian Lower Gondwana,
906 with remarks on the biostratigraphic importance of its taphoflora. *Palaeontographica*, Abt.
907 B 201, 111-134.
- 908 Price, R.A., 2004. Generic and familial relationships of the Taxaceae from *rbcL* and *matK*
909 sequence comparisons. *Acta Horticulturae* 615, 235-237.
- 910 Rai, H.S, Reeves, P.A., Peakall, R., Olmstead, R.G., Graham, S.W., 2008. Inference of
911 higher-order conifer relationships from a multi-locus plastid data set. *Botany* 86, 658-669.
- 912 Ramanujam, C.G.K., 1972. Fossil coniferous woods from the Oldman Formation (Upper
913 Cretaceous) of Alberta. *Canadian Journal of Botany* 50, 595-602.
- 914 Rajanikanth, A., Sukh-Dev, A., 1989. The Kota Formation: fossil flora and stratigraphy.
915 *Geophytology* 19, 52-64.
- 916 Renner, S.S., 2009. Gymnosperms. Pp. 157-160 in Hedges SB & S Kumar (eds.), *The*
917 *Timetree of Life*. Oxford University Press, Oxford, United Kingdom.
- 918 Roth-Nebelsick, A., Speck, T., 2000. Mechanical and hydrodynamic properties of vessels
919 with tertiary helical thickenings B new information about possible functional
920 relationships. Pp. 265-271 in Spatz HC & T Speck (eds.), *Plant Biomechanics*. Thieme
921 Verlag, Leipzig, Germany.
- 922 Roy, S.K., 1972. Fossil wood of Taxaceae from the McMurray formation (Lower Cretaceous)
923 of Alberta, Canada. *Canadian Journal of Botany* 50, 349-352.
- 924 Ryberg, P.E., Rothwell, G.W., Stockey, R.A., Hilton, J. Mapes, G., Riding J.B., 2012.
925 Reconsidering relationships among stem and crown group Pinaceae: Oldest record of the
926 genus *Pinus* from the Early Cretaceous of Yorkshire, United Kingdom. *International*
927 *Journal of Plant Sciences* 173, 917-932.
- 928 Samylin, V.A., 1988. Arkagala stratoflora of the Northeastern Asia. Nauka, Leningrad,
929 Russia (in Russian).
- 930 Serra, C., 1969. Sur les bois fossiles de l'archipel de Thô-Châu (Golfe de Thaïlande).
931 *Archives géologiques du Vietnam* 12, 1-15.
- 932 Seward, A.C., 1919. Fossil plants, volume IV. Hafner Publ., London, United Kingdom.
- 933 Sharma, B.D., 1971. *Taxaceoxilon cupressoides* sp. nov. from Dhokuti in the Rajmahal Hills,
934 India. *Ameghiniana* 7, 275-278.
- 935 Shilkina, I.A., 1989. Drevesiny khvoinykh iz nizhnego mela Kirovskoi oblasti (novye vidy)
936 [Conifer fossil woods from the Early Cretaceous of Kirov region (new species)]. Pp. 88–
937 100 in Takhtajan A.L. (ed.), *Voprosy paleofloristiki i stratigrafii* [Palaeofloristic and
938 Stratigraphic Questions]. St.-Petersburg: USSR Academy of Sciences and Botanical

- 939 Society, Leningrad, Russia (in Russian).
- 940 Shimakura, M., 1936. On the fossil wood of *Torreya nucifera* Sieb., et Zucc., from the
941 Pleistocene of Kanagawa-ken, Japan. Journal of the Geological Society of Japan 43, 297-
942 302.
- 943 Shirley, J., 1902. Fossil woods from the Ipswich beds, Boggo Road, Brisbane. Queensland
944 Geological Survey Bulletin 18, 3-15.
- 945 Spjut, R.W., 2007. Taxonomy and nomenclature of *Taxus* (Taxaceae). Journal Botanical
946 Research Institut of Texas 1, 203-289.
- 947 Stieber, L., 1955. Királdi alsó-miocén famaradványok xyotomiai vizsgálata. Pp. 75 in
948 Andreanszky, G. & Kovacs-Sonkodi, E. (eds.), A hazai fiatalabb harmadidőszaki flórák
949 tagolódása és ökológiája. A Magyar Állami Földtani Intézet Évkönyve 44, 75 (in
950 Hungarian).
- 951 Stopes, M.C., 1915. Catalogue of the Mesozoic plants in the British Museum (Natural
952 History). II - The Cretaceous flora, Part A. London: British Museum, London, United
953 Kingdom.
- 954 Süss, H., Schultka, S., 2006. Koniferenhölzer (Fusite) aus dem Oberjura vom Tendaguru
955 (Tansania, Ostafrika). Palaeontographica 275, 133-165.
- 956 Süss, H., Velitzelos, E., 1994. Ein neues fossiles Koniferenholz, *Taxaceoxylon biseriatum* sp.
957 nov., aus tertiären Schichten der Insel Lesbos, Griechenland. Feddes Repertorium 105,
958 257-269.
- 959 Taylor, T.N., Taylor, E.L., Krings, M., 2006. Palaeobotany. The biology and evolution of
960 fossil plants. Second edition. Elsevier, New-York, USA.
- 961 Terada, K., 2012. Late Triassic—Early Cretaceous coniferous woods in Japan: revisions of
962 their geological horizons and associated nomenclatural problems. Japanese Journal of
963 Palynology 58 (13th International Palynology Congress / 9th International Organisation of
964 Palaeobotany Conference (IPC XIII / IOPC IX 2012) special issue no. 519, 235.
- 965 Timell, T.E., 1978. Helical thickenings and helical cavities in normal and compression woods
966 of *Taxus baccata*. Wood Science and Technology 12, 1-15.
- 967 Timell, T.E., 1986. Compression wood in gymnosperms. Volume 1. Springer-Verlag Berlin
968 Heidelberg.
- 969 Tripathi, A., 2008. Palynochronology of Lower Cretaceous volcano-sedimentary succession
970 of the Rajmahal Formation in the Rajmahal Basin, India. Cretaceous Research 29, 913-
971 924.
- 972 Turner S.R., Somerville, C.R., 1997. Collapsed xylem phenotype of *Arabidopsis* identifies

- 973 mutants deficient in cellulose deposition in the secondary cell wall. *Plant Cell* 9, 689-701.
- 974 Unger, F., 1842. *Chloris protagaea*. In Endlicher S, *Mantissa botanica sistema generum*
975 *plantarum supplementum secundum*. Beck Verlag, Vienna, Austria.
- 976 Unger, F., 1858. Der versteinerte Wald bei Cairo und einige andere Lager verkieselten Holzes
977 in Ägypten. Staatsdruckerei, Vienna, Austria.
- 978 Van der Burgh, J., 1964. Hölzer des niederrheinisches Braunkohlenformationen, I. *Acta*
979 *Botanica Neerlandica* 13, 250-301.
- 980 Vaudois-Miéja, N., 1971. A propos de *Taxodioxydon falunense* (Houlbert, 1910) nov. comb.
981 du Miocène moyen des Faluns de Touraine. Pp. 99–114 in *Comptes Rendus du 94^e*
982 *Congrès National des Sociétés Savantes*, Pau, 1969, section sciences, tome III.
983 *Bibliothèque nationale*, Paris, France.
- 984 Vaupell, C., 1906. En botanisk Undersøgelse af det fossil Træ, der findes i Leer- og
985 Sandlagen i Danmark og af Havet op kastes med Ravet paa de danske Kyster. *Meddelingen*
986 *fra Dansk geol Forening* 12, 41-64.
- 987 Vozenin-Serra, C., 1977. Sur une pénétration insolite de Gymnospermes australes dans le
988 Sud-Est asiatique au Mésozoïque. *Comptes-rendus de l'Académie des Sciences (Paris)*,
989 série D 285, 1419-1421.
- 990 Vozenin-Serra, C., Salard-Chebouldaef, M., 1992. Les bois minéralisés permo-triasiques de
991 Nouvelle Calédonie. Implications phylogénétique et paléogéographique.
992 *Palaeontographica*, Abt. B 225, 1-25.
- 993 Walton, J., 1925. On some South African fossil woods. *Annals of South African Museum* 22,
994 1-26.
- 995 Wan, M., Zhou, W.M., Yang, W., Wang J., 2016. Charred wood of *Prototaxoxylon* from the
996 Wuchiapingian Wutonggou Formation (Permian) of Dalongkou, northern Bogda
997 Mountains, northwestern China. *Palaeoworld* 25, 21-31.
- 998 Watson, J., Lydon, S.J., Harrison, N., 2001. A revision of the English Wealden Flora, III:
999 *Czekanowskiales*, *Ginkgoales* & allied *Coniferales*. *Bulletin of the Natural History*
1000 *Museum, London (Geology Series)* 57, 29-82.
- 1001 Weishampel, D.B., Dodson, P., Osmólska, H., 2004. Dinosaur distribution (Early Jurassic,
1002 Asia). P. 534–535 in Weishampel D.B., P. Dodson & H. Osmólska (eds.), *The Dinosauria*,
1003 2nd ed. University of California Press, Berkeley, CA.
- 1004 Wolfe, J.A., Upchurch, G.R.Jr, 1987. North American nonmarine climates and vegetation
1005 during the Late Cretaceous. *Palaeogeography, Palaeoclimatology, Palaeoecology* 61, 33-
1006 77.

- Won, H., Renner, S.S., 2006. Dating dispersal and radiation in the gymnosperm *Gnetum* (Gnetales)-clock calibration when outgroup relationships are uncertain. *Systematic Biology* 55, 610-622.
- Xu, X.H., Sun, B.N., Yan, D.F., Wang, J., Dong, C., 2015. A *Taxus* leafy branch with attached ovules from the Lower Cretaceous of Inner Mongolia, North China. *Cretaceous Research* 54, 266-283.
- Yamazaki, S., Tsunada, K., 1982. Paleobotanical study on fusinites occurring in the Lower Jurassic Kuruma Group, Southwest Japan. *Memoirs of the School for Science and Engineering of Waseda University* 46, 73-123.
- Yamazaki, S., Okada, K., Tsunada, K., 1979. Paleobotanical characteristics of fusinite from the Paleozoic and Mesozoic strata in the Kanto Mountains, Japan. *Memoirs of the School of Science and Engineering of Waseda University* 43, 55-77.
- Yang, Z.Y., Ran, J.H., Wang, X.Q., 2012. Three-genome-based phylogeny of Cupressaceae s.l.: further evidence for the evolution of gymnosperms and southern Hemisphere biogeography. *Molecular phylogenetics and evolution* 64, 452-470.
- Zheng, S.L., Li, Y., Zhang, W., Li, N., Wang, Y.D., Yang, X.J., Yi, T.M., Yang, J.J., Fu, X.P., 2008. *Fossil woods of China*. China Forestry Publishing House, Beijing, China.

Figure captions

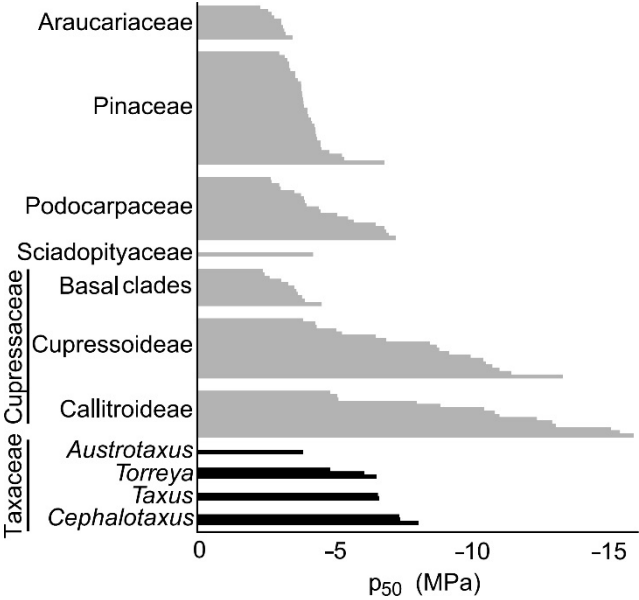
Figure 1: *Protelicoxylon lepenneicii* Philippe, Early Jurassic of France; here can be seen both a low pitch right-handed helix and steep-pitched microfibrillar pattern due to secondary wall alteration.

Figure 2: confusing spiral-like patterns. A - *Podocarpoxylon woburnense* Stopes, sample 58481 in British Museum of Natural History; steep angled microfibrillar pattern resulting from tracheid secondary wall differential attack. B - V13139 in British Museum of Natural History; low angled similar microfibrillar pattern, within a compression wood. C - V16556a in British Museum of Natural History; cleavage fractures running through tracheid walls in a mineralized wood. D - *Pityoxylon woodwardii*; oblique patterns interpreted as resulting of tunneling bacteria activity.

Figure 3: formation of a large spiral-like ribbon from araucarioid radial pitting. A & B - *Xenoxylon wattarianum* Nishida holotype, Chuo University; two alteration stages in the same slide. C - *Xenoxylon phyllocladoides* sample n°686901. Symmetrical transitions, in two adjacent tracheids, from araucarian radial pitting to a broad spiral pattern.

Figure 4: left, reproduction of Pl. III fig. 3 in Kraus (1887), warning about misinterpretation

1041 of crystal patterns; right, *Taxoxylon falunense* Houlbert, sample n°25 in the Musée du Grand-
 1042 Pressigny, Indre-et-Loire, France.
 1043 Figure 5: Wood assigned to genus *Protocallitrixylon*, unpublished wood by collected by
 1044 Kazuo Terada, sample n°FPDM-P-1130 in Fukui Prefectural Dinosaur Museum, Japan; Early
 1045 Cretaceous, Kitadani Fm, Tetori Group, Japan.
 1046



1047
 1048 Figure 6: Mean P_{50} values for the six conifer families. For the Taxaceae the mean values are
 1049 provided by genera. Most extant conifers have a P_{50} ranging between -3 and -6 MPa. Values
 1050 taken from Bouche et al. (2014), except for *Austrotaxus*, which comes from Larter (2016).
 1051

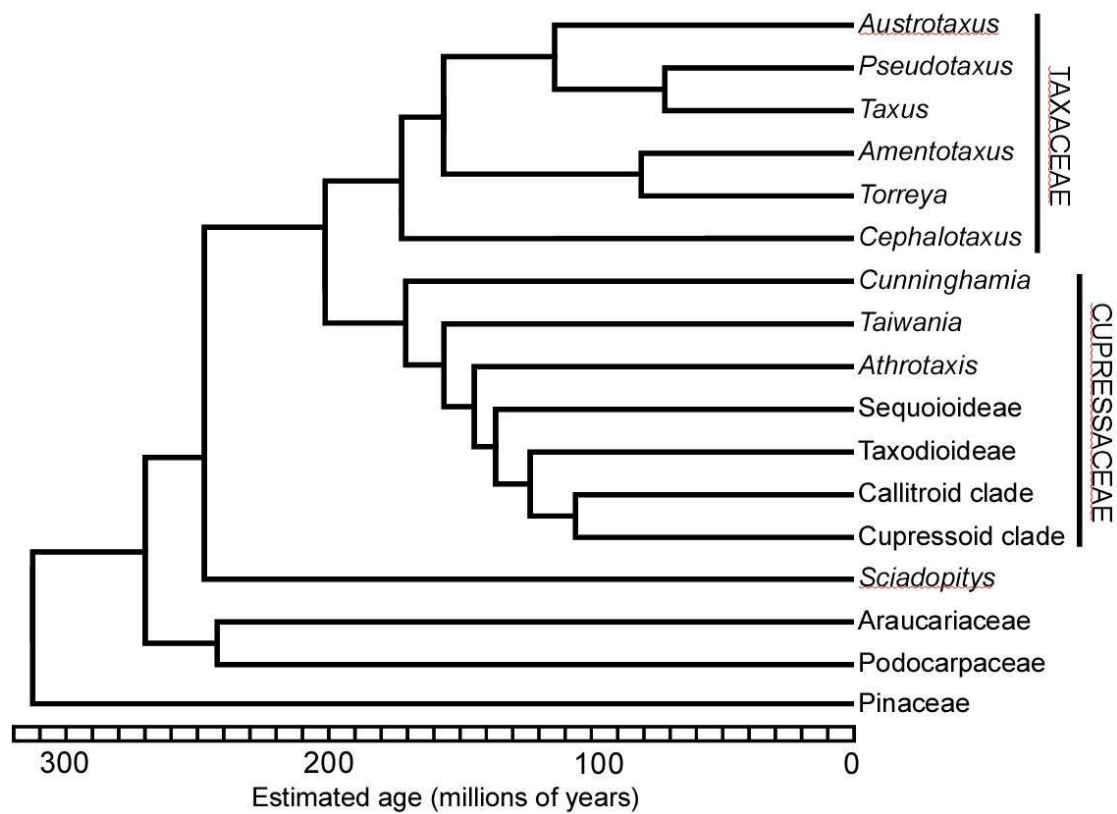


Figure 7: Dated molecular phylogeny used to discuss Taxaceae fossil wood record, based on Leslie et al. (2018).